



19S3

All Stainless Steel Multi-Function Bench Scales Series



2011/65/EU



19S3 Series is a robust, durable and economical solution for various weighing tasks. Designed according to IP 66, it is designed for meet medium to light wash-down hygienic requirements.

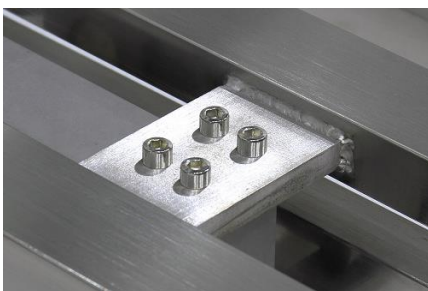
It is programmed to provide fast, easy, reliable and straightforward operation to meet an extraordinary wide range of applications no matter as a standalone unit or incorporated in an integrated weighing system.

Functions

- Static, Dynamic & Animal Weighing, Piece Counting and Peak Hold
- Support Single Range, Dual Range and Dual Interval Operation
- Support both Tension and Compression Load / Force Direction
- Near Zero Weight Value for Dynamic Weighing to avoid False Signal Output
- Built-in Logic for Constant Filling & Dispensing and Inflow / Outflow Control
- Add-Tare-Memory (ATM) & Remove-Tare-Memory (RTM) Function
- Manual, Preset, Auto, Repetitive and Continuous Tare Operation
- Continuous Tare with Configurable Delay Time before Tare Action
- Weight and Quantity Check Mode
- Quick Access PLUs for Weight Limits, Quantity Limits and Preset Tare Values
- Direct PLUs for Customer & Product Codes
- Check Result Control for Accumulation, Data Printout & Data Output
- Keypad Lock Function

Platform Features

- SUS #304 Stainless Steel Structure
- Rugged Structure for Harsh and Rugged Environment
- Complete Sealed Design Platform to Prevent Liquid Penetration
- Overload Protection Devices to Withstand Shocks & Overloads
- OIML C3 17-4 Stainless Steel Load Cell to Increase Durability and Reliability

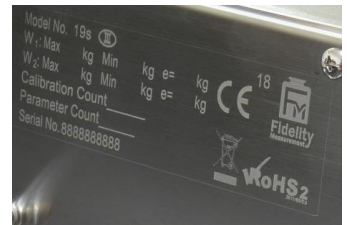


Versatility, Functionality and Accuracy are always Built-in

19S3 All Stainless Steel Multi-Function Bench Scales Series

Operation and Management Features

- Completely Sealed Heavy Duty SUS #304 Stainless Steel Housing. Designed according to IP66
- Full Numeric Keypad
- Configurable Machine ID, Machine Group and Operator Number to Enhance Ease of Multi-Scales Applications and Management Records
- Customer & Product Code Input through Serial Scanner or Keypad
- Customer & Product Code Support Numbers, Alphabets and Symbols Characters
- Support External [Zero], [Tare] and [Print/M+] Key Input through Scanner
- Tri-Color Check Result Indication
- Configurable Keypad, Check & System Buzzer
- 2 x Independently Configurable Bi-Direction Serial Comports. Selectable TTL Output for Comport 1
- Support Inquiry, Setting and Execution Commands through PC
- All Current Operation Results Output in Data Base Format Increases Ease & Efficiency of Data Management, Processing & Analysis
- Support Ticket Printer and Label Printer (Datecs LP-50 & TSC TDP-225, TDP-247, TDP-345, TTP-225, TTP-247, TTP-345)
- Selectable Portrait / Landscape Ticket Printout Format
- 6 x 45mm Huge Size Bold Type Wide Angle LCD Numeric Digits
- Zero, Gross, Net, Weighing Range, Memory & Battery Level & Recharge Indicators
- Watchdog System to Prevent Damages caused by Load Cell Short-circuit.
- Smart Charging Circuits
- Real Time Clock



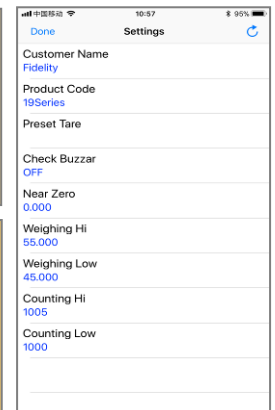
Adjustable Tri-Color Check Result Backlight

Apps for Smart Phones & Devices

Free iOS App (i19) & Android App (a19) are available at App Store and Google Play respectively.

These Apps are so powerful that actually they turn your smart devices into a handheld terminal, remote display, remote data input center and controller of your FM product connected.

Both Apps support connection via Bluetooth and WIFI.



Versatility, Functionality and Accuracy are always Built-in

19S3 All Stainless Steel Multi-Function Bench Scales Series

End User PC Software

- Freeware Specially Created to Support End Users
- Real Time Operation Status Monitoring
- Operation Parameters Setting
- Real Time Process Monitoring
- Individual and Totalized Record Storage
- Database File Output



Output Formats

```

Time 14:27:24
Date 2016-10-06
Seq 1
Name VNFHRUDHFLQAUOKMCB
Pcode 12345678901234567A
Net 5.000kg
Tare 2.500kg
Gross 7.500kg
Total 5.000kg

High 10.005kg
Low 9.995kg
Below limit
    
```

Printout Format #2

```

Name VNFHRUDHFLQAUOKMCB
Pcode 12345678901234567A
Opr 3333
Mac 8888
MacGp 77

Date 2016-10-06
Time 14:25:24

Seq Gross Net
001 7.500 5.000 kg
002 7.500 5.000 kg
003 9.999 7.499 kg
004 9.999 7.499 kg
005 12.500 10.000 kg
006 5.000 2.500 kg
-----
006 37.498 kg
    
```

Printout Format #4

```

Name VNFHRUDHFLQAUOKMCB
Pcode 12345678901234567A
Opr 3333
Mac 8888
MacGp 77

Date 2016-10-06

Seq Time Net
001 14:26:11 2.500 kg
002 14:26:14 5.000 kg
003 14:26:18 7.499 kg
004 14:26:25 2.500 kg
005 14:26:28 5.000 kg
006 14:26:31 7.499 kg
-----
006 Total 29.998 kg
    
```

Printout Format #5

	Opr	Seq	Mode	Mac	MacGp	Date	Time	Name	Pcode	Gross	Tare	Net	Low	High	Result	Total.W	Unit				
Weighing	3333	1	0	8888	77	2016/10/6	11:17:08	VNFHRUDHFLQAUOKMCB	12345678901234567A	12.500	5.000	7.500	4.995	5.005	Abovelimit	7.50	kg				
Weighing	3333	2	0	8888	77	2016/10/6	11:17:14	VNFHRUDHFLQAUOKMCB	12345678901234567A	15.000	2.500	12.500	4.995	5.005	Abovelimit	20.00	kg				
Weighing	3333	3	0	8888	77	2016/10/6	11:17:22	VNFHRUDHFLQAUOKMCB	12345678901234567A	15.000	5.000	10.000	4.995	5.005	Abovelimit	30.00	kg				
Weighing	3333	4	0	8888	77	2016/10/6	11:17:29	VNFHRUDHFLQAUOKMCB	12345678901234567A	10.000	5.000	5.000	4.995	5.005	Accept	35.00	kg				
Weighing	3333	5	0	8888	77	2016/10/6	11:17:46	VNFHRUDHFLQAUOKMCB	12345678901234567A	7.500	2.500	5.000	9.995	10.005	Belowlimit	40.00	kg				
Weighing	3333	6	0	8888	77	2016/10/6	11:17:50	VNFHRUDHFLQAUOKMCB	12345678901234567A	5.000	2.500	2.500	9.995	10.005	Belowlimit	42.50	kg				
	Opr	Seq	Mode	Mac	MacGp	Date	Time	Name	Pcode	Gross	Tare	Net	Total.W	Unit	Count	Unit.W	Unit	Low	High	Result	Total.C
Piece Count	3333	1	1	8888	77	2016/10/6	11:18:18	VNFHRUDHFLQAUOKMCB	12345678901234567A	5.000	2.500	2.500	2.500	kg	19999	0.12499	g	19995	20005	Accept	19999
Piece Count	3333	2	1	8888	77	2016/10/6	11:18:25	VNFHRUDHFLQAUOKMCB	12345678901234567A	7.500	2.500	5.000	7.500	kg	40002	0.12499	g	19995	20005	Abovelimit	60001
Piece Count	3333	3	1	8888	77	2016/10/6	11:18:31	VNFHRUDHFLQAUOKMCB	12345678901234567A	7.500	5.000	2.500	10.000	kg	20003	0.12499	g	19995	20005	Accept	80004
Piece Count	3333	4	1	8888	77	2016/10/6	11:18:37	VNFHRUDHFLQAUOKMCB	12345678901234567A	7.500	5.000	2.500	12.500	kg	20003	0.12499	g	19995	20005	Accept	100007
Piece Count	3333	5	1	8888	77	2016/10/6	11:18:43	VNFHRUDHFLQAUOKMCB	12345678901234567A	5.000	2.500	2.500	15.000	kg	19999	0.12499	g	19995	20005	Accept	120006
Piece Count	3333	6	1	8888	77	2016/10/6	11:18:47	VNFHRUDHFLQAUOKMCB	12345678901234567A	7.500	2.500	5.000	20.000	kg	40002	0.12499	g	19995	20005	Abovelimit	160008

Database Output Content Illustration: - Weighing and Piece Count Mode

Options

- SUS #304 Stainless Steel Pillar
- SP-POS58IV & SP-POS88IV Thermal Ticket Printer
- LP-50, TDP-225, TTP-225, TTP-247, TTP-345 Label Printer
- Serial Bar Code Scanner
- WM Wireless Communication Module
- RD-DOT Dot Matrix Remote Display
- Built-in 4-Channel Control Relay Board (Factory installation required, rechargeable battery has to be removed)
- Built-in LAN Communication Module (Rechargeable Battery has to be removed)

Versatility, Functionality and Accuracy are always Built-in

19S3 All Stainless Steel Multi-Function Bench Scales Series

Specifications

Model No.	Capacity	Readability		Platform Dimensions	IP Rating
		Approved	Non-Approved		
19S3-B15	15kg	0.005kg	0.002kg	300 x 400mm	IP66
19S3-B30	30kg	0.01kg	0.005kg		
19S3-B60	60kg	0.02kg	0.01kg		
19S3-B150	150kg	0.05kg	0.02kg		
19S3-F30	30kg	0.01kg	0.005kg	400 x 500mm	IP66
19S3-F60	60kg	0.02kg	0.01kg		
19S3-F150	150kg	0.05kg	0.02kg		
19S3-F300	300kg	0.1kg	0.05kg		
19S3-L60	60kg	0.02kg	0.01kg	500 x 650mm	IP66
19S3-L150	150kg	0.05kg	0.02kg		
19S3-L300	300kg	0.1kg	0.05kg		
Load Cell	<ul style="list-style-type: none"> • Approval: - OIML C3 • Material: - 17-4 Stainless Steel 				
Weight Units	kg, g, lb				
Display	6 x 45mm Huge Size Bold Type Wide Angle LCD Numeric Digits				
Micro Processor	32-bit High Speed & High EMC Immunity				
A/D Converter	24 bit Low-Noise Delta to Sigma (Δ - Σ)				
Tare Range	- Max (Subtractive Tare)				
Accessories	Universal Power Adaptor				
Operating Environment	-10 ~ 40°C (14 ~ 104°F) Non-condensed R.H. ≤85%				

In the interest of improvement, specifications may change prior to notice

